



THE ANALYSIS OF THEORETICAL APPROACHES FOR CALCULATING VARIOUS FINANCIAL RATIOS

Ruta Šneidere

University of Latvia

Aspazijas bulv. 5 - 434, Riga, LV-1050, Latvia

Phone: +371 67034633

E-mail: ruta.sneidere@lu.lv

Keywords: analysis, methods, profitability, turnover

Abstract

Nowadays the methods of financial analysis are widely used to estimate a company's financial position and operating results. Studying scientific literature of the theoretical guidelines for the financial analysis we can find different approaches. The aim of the research is to study methods of various financial ratios calculations and basing on the empirical research findings to develop the recommendations for improvement the methods for it. The author of this paper is studying theoretically different scientist's findings for using book value or average value of balance sheet analyzing such important ratios as turnover of companies. For the empirical research the data from annual statements of Latvian companies of manufacturing and trade branches are used. In the research the author has applied quantitative and qualitative methods of economics such as the mathematical and the statistical methods, the ratio analysis, the graphical method, the logically – constructive methods. At the end of the research the author summarizes the general conclusions and findings.

Introduction

Nowadays we often can hear that accounting is the language of business. It is the vehicle for communicating financial information about company to many different groups of users of accounting data – creditors, investors, suppliers, managers, owners, government agencies and others analysts. Every user needs different financial information of a company, but they all use methods of financial analysis. Financial analysis means different things to practitioners across a wide range of industries, disciplines, regulatory authorities and standard setting bodies. [3]

To decide what ratios to analyze an analyst must the first decide what kind of financial information he needs to know about a company. The main question for assessing the performance of companies is to indicate the efficiency of usage of the assets in producing revenue and profits. Studying scientific literature of the theoretical guidelines for the financial analysis we can find different approaches. Calculating financial ratio of assets turnover, some scientists have recommended to use average value, others – book value of assets. Using the different approaches for calculation financial ratios it is important to know, if there are significant differences between the calculated results. The aim of the research is to study various



methods of assets turnover calculations and basing on the empirical research findings to develop the recommendations of the usage methods for it calculations. The methodological bases are scientific and training literature, statistical data and accessible Annual reports of manufacturing and trade branches of Latvian companies. The research period for data of annual statements is from 2007 till 2010, theoretical approaches have been investigated since 1997. In the research the quantitative and qualitative methods of economics such as the mathematical and the statistical methods, the ratio analysis, the graphical method, the logically – constructive methods have been applied.

1. Theoretical Approaches of Calculation Turnover Ratios

When examining a balance sheet, an analyst will draw company-specific conclusions about the size, nature, and value of the assets listed, looking at relative proportions, and judging whether the company has a viable asset base. In a more overall sense, a few ratios are used to judge broad trends in resource utilization. Such ratios essentially involve turnover relationships and express, in various forms, the relative amount of capital used to support the volume of business transacted. [6]

Asset turnover is the one of driver of a company's return on equity. Since firms invest considerable resources in their assets, using them productively is critical to overall profitability. In some industries, a key barrier to entry is the large amount of assets required to produce revenue. [2] A detailed analysis of asset turnover allows the analyst to evaluate the effectiveness of a firm's investment management Accounts receivable turnover, inventory turnover and accounts payable turnover allow the analyst to examine how productively the three principal components of assets are being used. Another area of investment management concerns the utilization of a firm's long-term assets. Property, plant and equipment (PP&E) is the most important long-term asset in a firm's balance sheet. The formulas of calculating assets turnover recommended by K.G. Palepy, P.M. Healy and V.L. Bernard are following [9]:

$$\text{Accounts receivable turnover} = \text{Sales} / \text{Accounts receivable} \quad (1)$$

$$\text{Inventory turnover} = \text{Costs of goods sold} / \text{Inventory} \quad (2)$$

$$\text{Accounts payable turnover} = \text{Costs of goods sold} / \text{Accounts payable} \quad (3)$$

$$\text{PP\&E turnover} = \text{Sales} / \text{Net property, plant, and equipment} \quad (4)$$

The same approaches we can find in R.C. Higgins work. [8]

However, G. White, A. Sondhi D. Fried and G. Friedlob have different approach for calculation asset turnover They notes, that the analyst's primary focus should be the relationships indicated by the ratios, not the details of their calculation and we can suggest many adjustments to and modifications of these basic ratios. When one of the components of the ratio comes from the balance sheet and the other from the income statement, the balance sheet component is an average of the beginning and ending balances. In practise, some analysts use beginning or ending balances for such mixed ratios. The formulas calculating assets turnover recommended by G. White A. Sondhi. D. Fried and G. Friedlob, are following [10:4]:

$$\text{Inventory turnover} = \text{Costs of goods sold} / \text{Average Inventory} \quad (5)$$

$$\text{Receivable turnover} = \text{Sales} / \text{Average trade Receivable} \quad (6)$$



New Challenges of Economic and Business Development – 2012

May 10 - 12, 2012, Riga, University of Latvia

$$\text{Payable Turnover} = \frac{\text{Purchases (Costs of goods sold + the change in inventory)}}{\text{Average Accounts Payable}} \quad (7)$$

$$\text{Fixed Asset Turnover} = \frac{\text{Sales}}{\text{Average Fixed Asset}} \quad (8)$$

$$\text{Total Asset Turnover} = \frac{\text{Sales}}{\text{Average Total Asset}} \quad (9)$$

From Erich Helfert's point of view, the most commonly used ratio relate net sales to gross assets, or net sales to net assets. The measure indicates the size of the recorded asset commitment required to support a particular level of sales or, conversely, the sales dollars generated by each dollar of assets. The turnover ratios serves as one of several clues that, in combination, can indicate favourable or unfavourable performance. The assets turnover calculation is following [6]:

$$\text{Sales to assets} = \frac{\text{Net sales}}{\text{Gross assets}} \quad (10)$$

$$\text{Sales to net assets} = \frac{\text{Net sales}}{\text{Net assets}}^1 \quad (11)$$

The difference between the two sets of calculations lies in the choice of the assets total, that is whether to use gross assets or net assets. Using net assets eliminates current liabilities from ratio. Here the assumption is that current liabilities, which are mostly operational (accounts payable, current taxes due, current repayments of short-term debt, and accrued wages and other obligations) are available to the business as a matter of course. Therefore, the amount of assets employed in the business is effectively reduced by these ongoing operational credit relationships. This concept is especially important for trading firms, where the size of accounts payable owed suppliers is quite significant in the total balance sheet. [6]

Among the assets of a company the inventories and accounts receivable are usually given special attention. The ratios used to analyze them attempt to express the relative effectiveness with which inventories and receivables are managed. The amounts as stated on the balance sheet are generally related to the single best indicator of activity levels, such as sales or cost of sales (cost of goods sold), on the assumption that a reasonably close relationship exists between assets and the indicator. In assessing the effectiveness of a companies inventory management, it's more common to use the number of times inventory has turned over during the period of analysis using the following formulas [6]:

$$\text{Inventory turnover} = \frac{\text{Net sales}}{\text{Average inventory}} \quad (12)$$

$$\text{Inventory turnover} = \frac{\text{Costs of sales}}{\text{Average inventory}} \quad (13)$$

Normally average inventories are used to make this calculation. At times, it may be desirable to use only ending inventories, especially in the case of rapidly growing firms where inventories are being built up to support steeply rising sales. When dealing with any manufacturing company, we also must be particularly aware of the problem of accounting measurements – so often encountered when using other analytical methods – because the stated value of inventories can be seriously affected by the specific cost accounting system employed. [7]

The analysis of accounts receivable is based on net sales and calculation is following [6]:

$$\text{Receivable turnover} = \frac{\text{Net sales}}{\text{Accounts receivable}} \quad (14)$$

¹ Net assets = total assets less current liabilities, representing the capitalization of the business



New Challenges of Economic and Business Development – 2012

May 10 - 12, 2012, Riga, University of Latvia

The relation of accounts receivable to sales is governed by credit policies and collection methods.

Comparing the above mentioned scientists' approaches for computing assets turnover ratios, the author of this paper concludes that there is some scientists who prefers assets book value at the end of the annual year, while the other recognizes average value of assets. Different terminology formulating types of assets, sales and costs for calculating ratios are used, too (Table 1).

Table 1

Summary of scientists' approaches for computing assets turnover ratios*

Types of assets, sales and costs	K.G. Palepy, P.M. Healy, V.L. Bernard, R.C. Higgins	G. White, A. Sondhi, D. Fried, G. Friedlob	E.A. Helfert
Accounts receivable	X		X
Average trade Receivable		X	
Accounts Payable	X		
Average Accounts Payable		X	
Average Inventory		X	X
Inventory	X		X
Costs of goods sold	X	X	
Costs of goods sold + the change in inventory		X	
Costs of sales			X
Net sales			X
Sales	X	X	
Net property, plant, and equipment	X		
Average Fixed Asset		X	
Average Total Asset		X	
Gross assets			X
Net assets			X

Source: Table made by the author of this paper

To get the answer to the question – if significant differences between the calculated results using different approaches exist, the author of this paper will study in the next chapter.

2. Data Collection for Empirical Research

For empirical study the financial statements of 10 Latvian companies, whose business orientation is manufacturing and trade, were used. Assets turnover ratios were calculated from Balance sheet and Income statement in the period of 2008 – 2010 of each company. The data



from 2007 of Balance sheet were used for average value calculations of assets too. Overall, were 30 ratios calculated using average value of assets and 30 ratios – using book value of assets. The same approaches for calculation receivables and inventory turnover were used. Taking into account, that any business, large or small, can be described as a system of financial relationships, in the study an accidental random set of companies was used. The assets book value of the analysed companies had from 94 to 0.7 million lats.

3. Analysis of Empirical Results

To achieve the aim of the current research, turnover ratios of assets, inventories and receivables were used. The formulas No. 9 and No. 10 for asset turnover were used, formulas No. 2 and No. 13 for the inventory turnover and formulas No. 6 and No. 14 for receivables turnover were used.

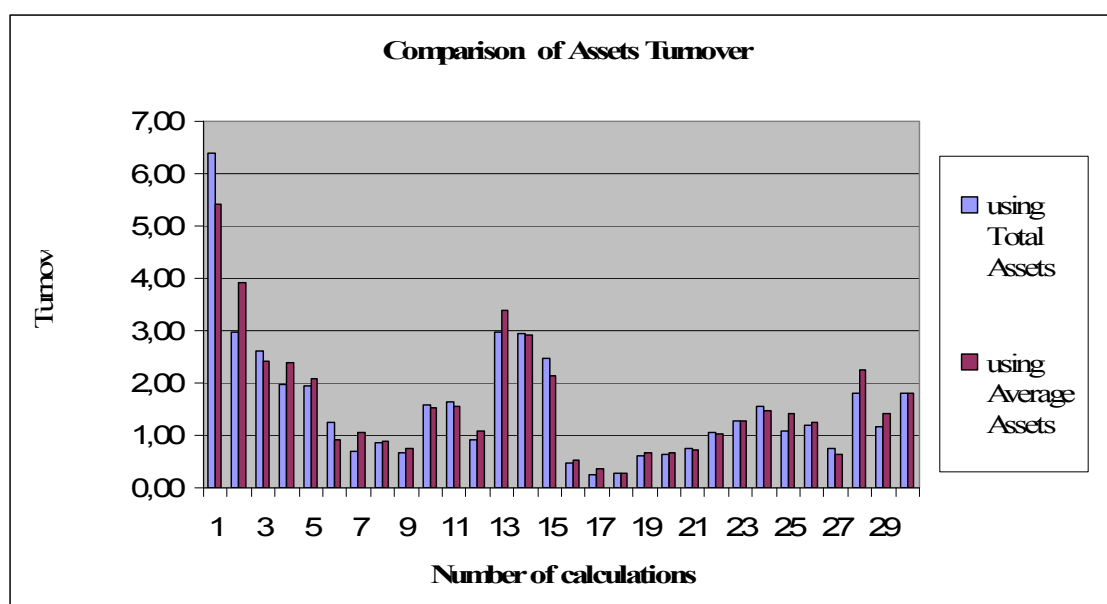


Figure 1. Comparisons of Assets Turnover Ratios

Source: Figure made by the author of this paper

The results of calculation of assets turnover (Figure 1) shows, the greatest differences between ratios using total assets and average assets are observed at calculation No. 1, where assets turnover ratio is 6.4 and average assets turnover – 5.4 and No. 2, where assets turnover ratio – 2.9 and average assets turnover – 3.9. Analysing the tendencies of those calculations of the last three years, the author concludes, that using both methods the changes of assets turnover ratio shows the same tendencies. Other numbers of calculations showed the same tendencies of changes of ratios and differences of their turnover ratios are unimportant for estimating financial



situation of a company, therefore the author came to the conclusion, that there are no significant differences between used approaches computing companies assets turnover ratios.

The next object of calculations was turnover of accounts receivable. For most companies selling on credit, accounts and notes receivable are an important part of working capital. [1]

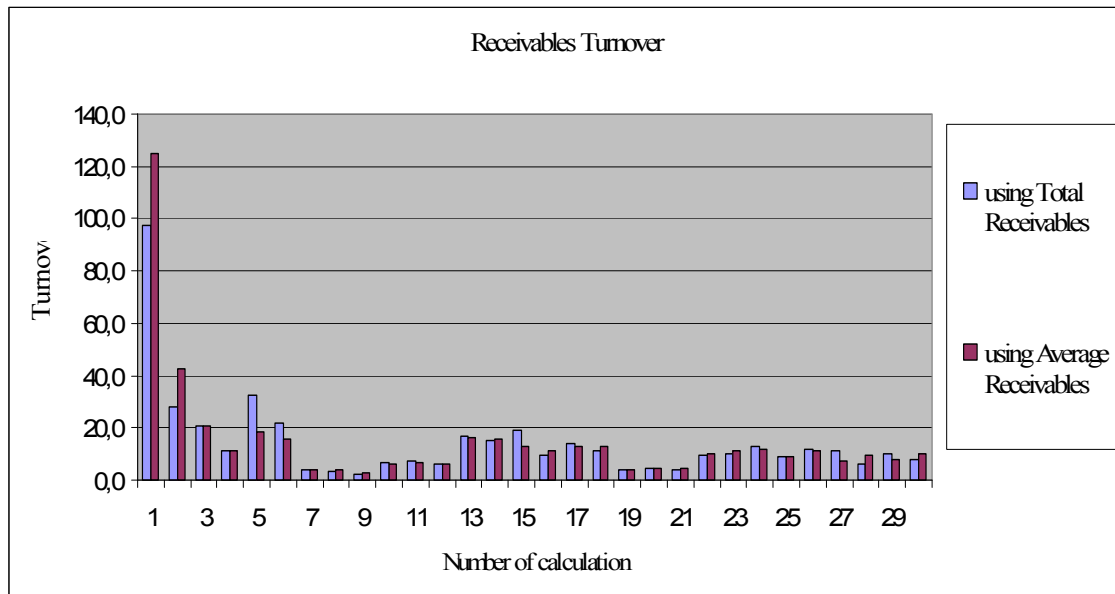


Figure 2. Comparisons of Receivables Turnover Ratios

Source: Figure made by the author of this paper

Results of calculation of receivables turnover (Figure 2) shows, the greatest differences between ratios using total receivables and average receivables is observed at calculation No. 1 and No. 5. At calculation Nr 1 total receivables turnover ratio are 97.8 and average receivables turnover – 124.9. Both calculated ratio are very high, transmitting ratio to receivables collection period – receivables collection days are 3.7 and 2.9, that means company does not practise selling on credit, so that receivables turnover ratio for assessing financial situation is not necessary. Estimating calculations No. 5, where total receivables turnover ratio is 32.6 and average receivables turnover – 18.7, the author concludes, that, the company has probably changed the policies of selling on credit, because the next calculations result of the following year of this company showed fewer differences between total and average receivables ratio – 21.9 and 15.5. To estimate a more objective result of calculation it is necessary to test annex of annual report of a company, where accounting policy of the company is described. That information for the author of this paper was not available. Analysing the tendencies of those calculations results of the last three years, the author conclude, that they are the same – turnover ratios shows the same tendencies of changes of ratios. Other numbers of calculations showed the same tendencies of changes of ratios and differences of their turnover ratios are unimportant for estimating financial situation of a company, therefore the author came to the conclusion, that



there are no significant differences between used approaches computing companies receivables turnover ratios.

Inventory turnover ratio is important for every company which sells his production. The inventory turnover ratio indicates the liquidity of inventories. The higher the ratio, the more quickly inventory is being sold. [2] Inventories are investments made for purpose of obtaining a return. This return is derived from the expected profits resulting from sales to customers. In most companies, a certain level of inventory must be kept. [1]

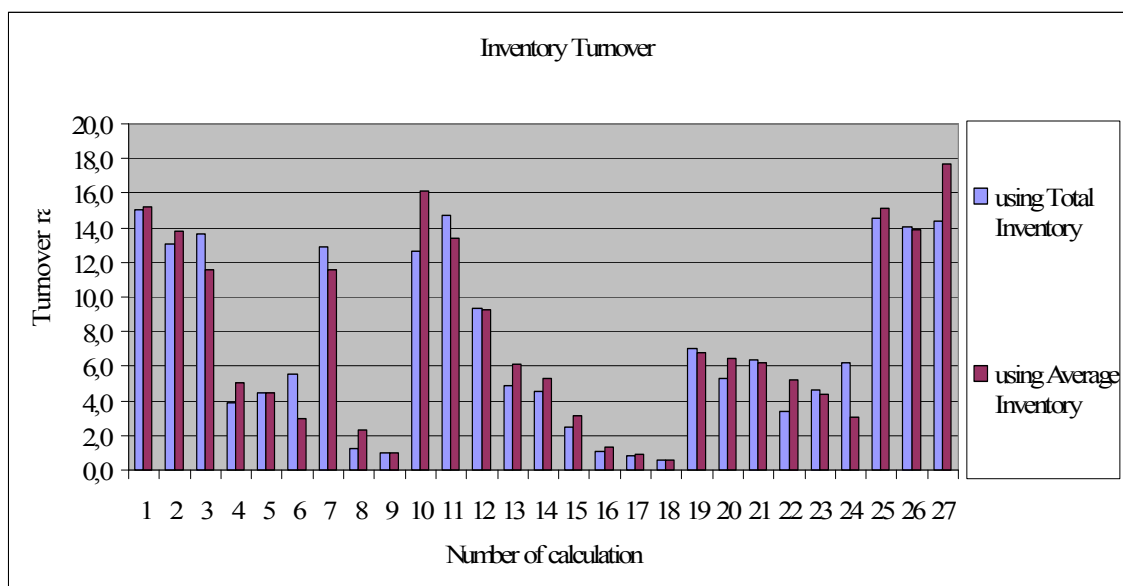


Figure 3. Comparisons of Inventory Turnover Ratios

Source: Figure made by the author of this paper

Analysing turnover ratios (Figure 3), the author cut out 3 calculations of the one company because its inventory turnover ratios were too high – more than 400 times. Testing the annex of the annual report, the author got information, that the company has a specific business features – manufacturing depends on customers orders and the production cycle is very short, so the company has no significant value of inventory at the end of the year. The results of the calculation of inventory turnover (Figure 3) shows, the greatest differences between ratios using total inventory and average inventory are observed at calculation No. 10 and No. 27. At calculation No. 10 total inventory turnover ratio is 12.7 and average inventory turnover – 16.1, calculations No. 27 – total inventory turnover ratio is 14.7 and average inventory turnover is 17.7. Analysing the tendencies of those calculations results the author concludes – inventory turnover ratios, using different approaches of calculations, shows the same tendencies of changes of ratios. Other numbers of calculations showed that there are no significant differences between results, therefore allows conclude, that there are no significant differences between used approaches computing inventory turnover ratios of companies.



New Challenges of Economic and Business Development – 2012

May 10 - 12, 2012, Riga, University of Latvia

Conclusions

The turnover ratio serves as one of several clues, that in combination, can indicate favourable or unfavourable performance. Studying scientific literature of the theoretical guidelines for the turnover calculations the author of this paper found different approaches - some scientists prefer assets book value at the end of an annual year, while the others scientists recognize average value of assets. To achieve the aim of the current research, turnover ratios of assets, inventories and receivables were used. Analysing the tendencies of assets turnover ratio of the last three years which were calculated using different approaches, the author concludes, that all turnover ratio shows the same tendencies and there are no significant differences between the used approaches computing assets turnover ratios of companies. The same result of analysis showed that there are no significant differences between the used approaches computing receivables and inventory turnover ratios of companies. Basing on the empirical research findings the authors recommendations for analysts are that both approaches – assets book value or average assets value are useful for turnover calculations. The choice between the different approaches of calculations depends on the analyst. The analyst should make his choice before starting calculation for analysis and the chosen approach for calculating turnover ratios should be applied consistently year by year. Otherwise the calculated results will not comparable. At the end of current research the author wants to note, that the same study must continue with other important ratio – profitability of assets and equity.

References

1. L.A. Bernstein. Analysis of Financial Statements. Fifth edition, McGraw-Hill, 2000, 367 p.
2. S.M. Brag. Business Ratios and Formulas. A Comprehensive Guide. Second Edition, John Wiley & Sons, Inc, 2007, 364 p.
3. W. Brammertz and others. Unified Financial Analysis. John Wiley & Sons, Ltd, 2009, 433 p.
4. G.T. Friedlob, L.L. Schleifer. Essentials of Financial Analysis. John Wiley & Sons, Ltd, 2003, 234 p.
5. C. Gowthorpe. CIMA'S Official Learning System. Financial Analysis. ELSEVIER, 2008, 691 p.
6. E.A. Helfert. Techniques of Financial Analysis: A Modern Approach. Ninth Edition, IRWIN, 1997, 457 p.
7. E.A.Helfert. Financial Analysis Tools and Techniques: A Guide for Managers. Mcgraw-Hill, 2001, 485 p.
8. R.C. Higgins. Analysis for Financial Management. Sixth Edition, Irwin McGraw-Hill, 2001, 412 p.
9. K.G. Palepy, P.M. Healy and V.L. Bernard. Business Analysis & Valuation. Thomson South-Western, 2004, 348 p.
10. G. White, A. Sondhi and D. Fried. The Analysis and Use of Financial Statements. Third Edition, John Wiley & Sons, 2003, 767 p.